

Hāmākua Energy and Battery Energy Storage Project

*Strengthening Our Future Together at
Hāmākua Energy*

Quarterly Community Outreach Meeting

Hāmākua Energy, LLC

March 24th, 2026



Logistics



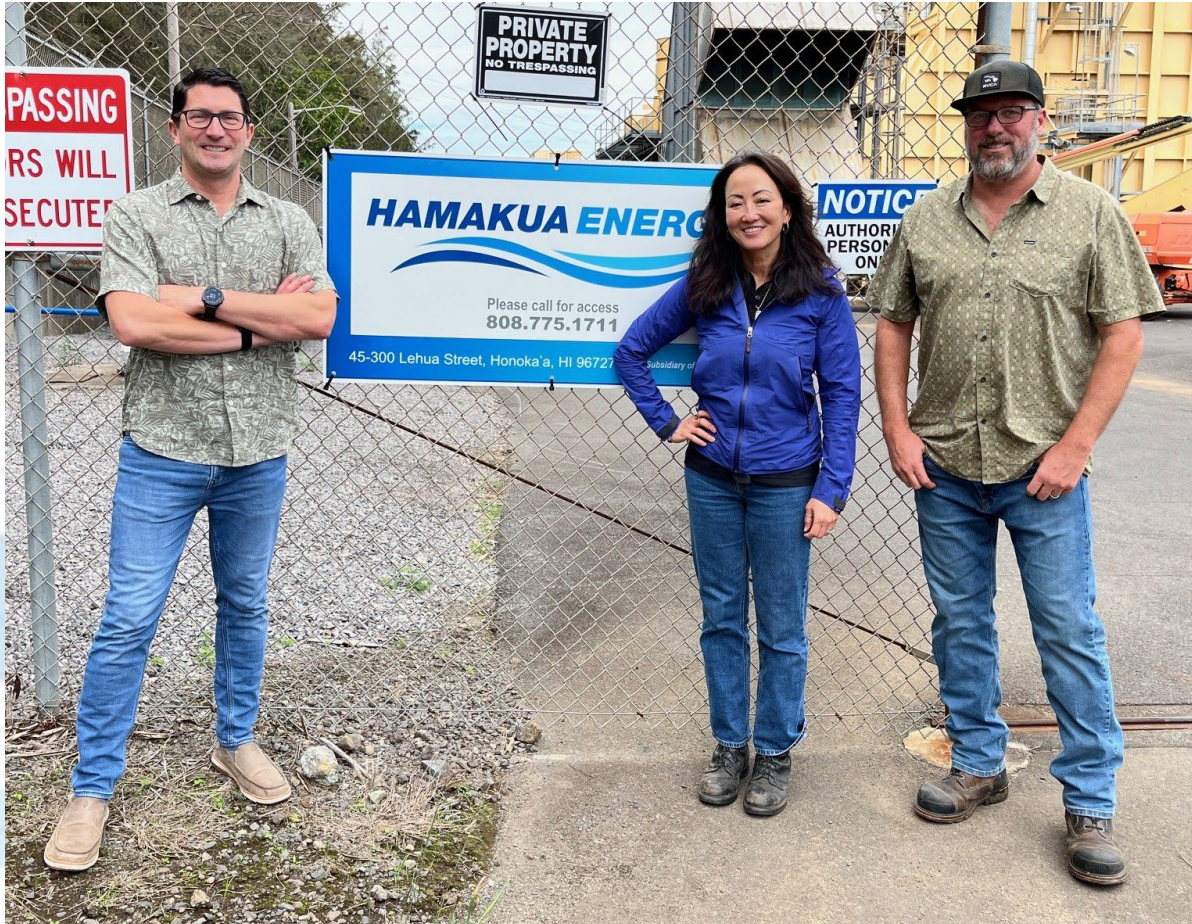
- Meeting participants placed on mute until Q&A
- Please ask questions during the presentation via:
 - E-mail to:
Akomatsuzaki@hamakuaenergy.com
 - Utilize the Q&A function in Microsoft Teams
 - Live Q&A session at end of presentation

Agenda

- Project Benefits
- Community Benefits
- Facility Location
- Project Description
- Site Layout Plan
- Interconnection Route
- Government Permits/Environmental Impacts
- Environmental Impacts
- Cultural Impacts
- Construction Updates/Related Impacts
- Local Labor and Community Impact
- Community Benefits Package
- Where to Find More Info
- Other Plant Updates



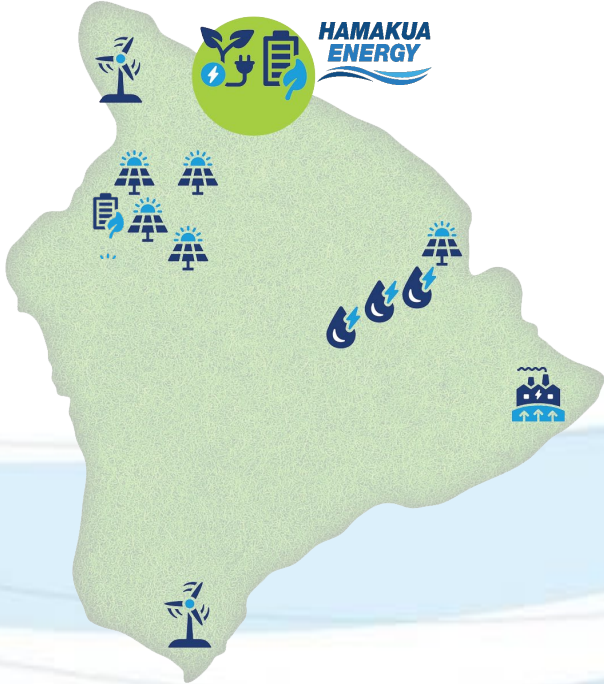
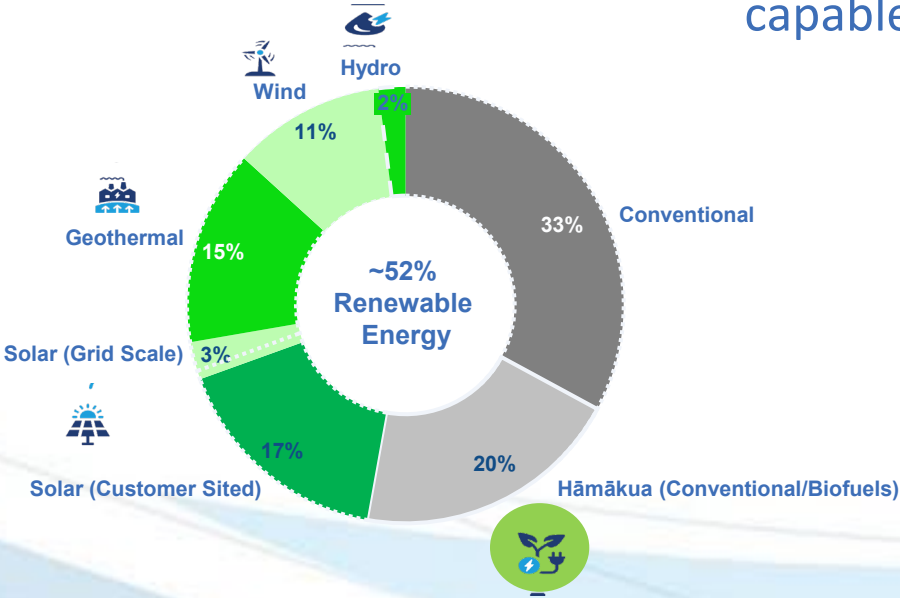
Meet the Team Leads



- Tony Pastrama, Hāmākua Plant Manager
- Amy Komatsuzaki, Asset Manager
- Dan Muxie, Owner Representative

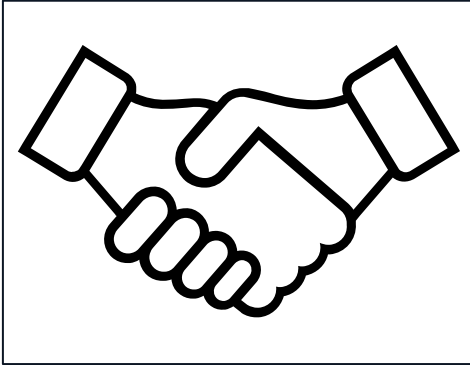
1. Project Benefits

- Hāmākua is a firm dispatchable resource of energy and capacity on Hawai'i Island
- Hāmākua will be 100% Renewable fuels capable under the Stage 3 contract



2. Community Benefits

An Enduring Commitment to the Community



**Commitment to
Community, Active
Partner Serving
Future Generations**

Our Past

Our Present

Our Future

**New ownership evaluating opportunities for the
most impact to the community**

3. Facility Location



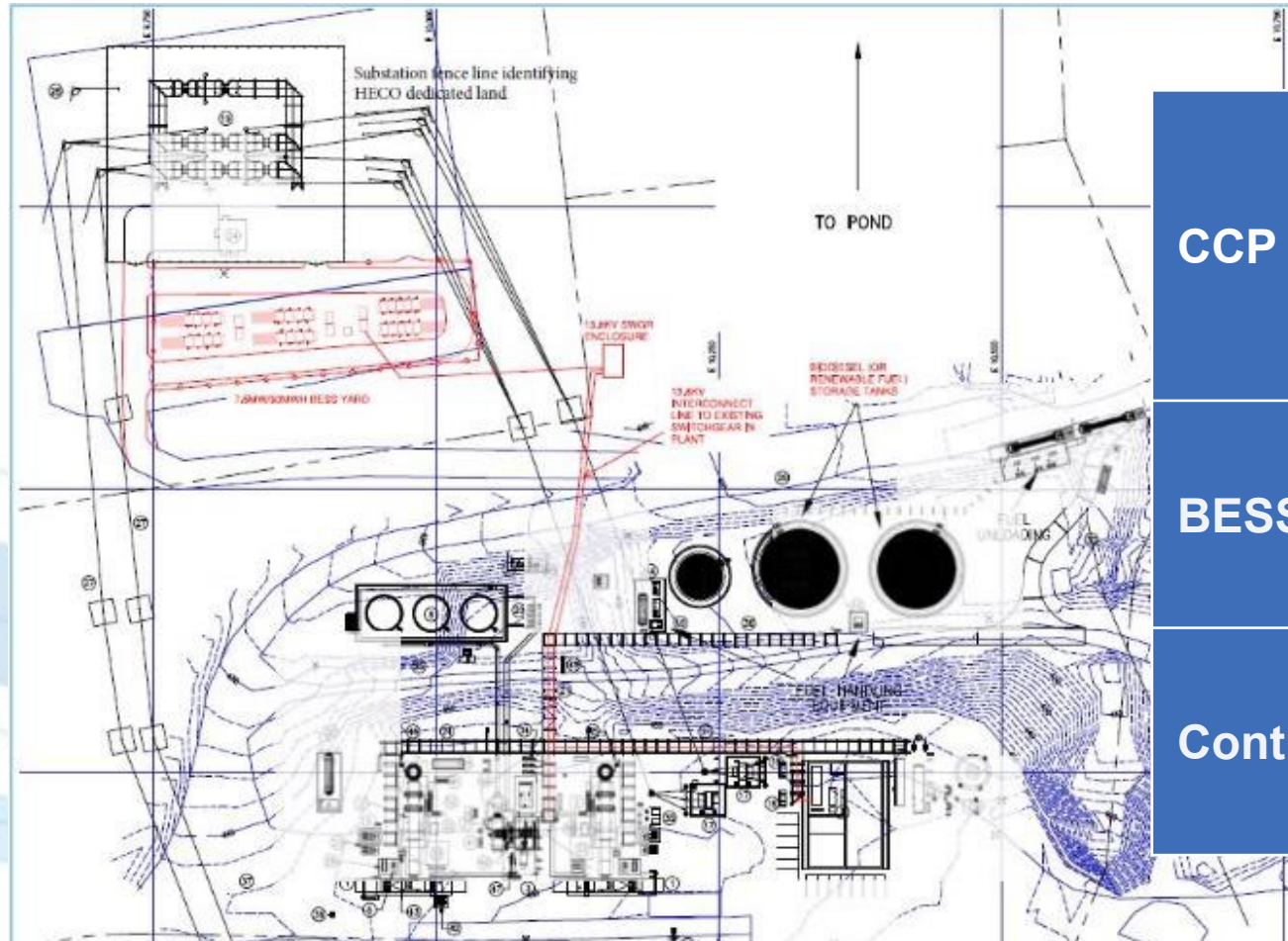
Hāmākua Energy, LLC
45-298 Haina Camp Road
Honoka'a, Hawai'i 96727

4. Project Description

- Hāmākua Energy located in Honokaʻā, Hawaiʻi
 - 60 MW combined cycle power plant in operation since 2000
 - Provides approximately 1/5 of Island's energy
 - One of the most fuel-efficient power plants on the island
 - New contract under negotiation to commence upon natural expiration of existing contract
 - No cultural or historic resources on the project land

- Hāmākua Battery Energy Storage System (BESS) – on existing land
 - 7.5 MWs (30 MWhrs, 4-hour duration)
 - Planned project completion to align with natural expiration of existing contract
 - Negotiating new power purchase agreement with Hawaiian Electric for a 20-year term
 - BESS project designed to reduce low load CT operations
 - No cultural or historic resources on the project land

5. Site Layout Plan



CCP (Existing)

- Refurbished for long-term operations
- Capable of 100% renewable fuels
- Utilizes existing footprint

BESS

- New 7.5 MW/30 MWHrs
- Interconnected to existing plant

Control

- New controls system for BESS/CCP

6. Interconnection Route



Interconnection	Use existing Haina substation
Route	No change
Substation	HELCO reviewing potential upgrades

No additional transmission lines are required to be constructed for this project

7. Government Permits/ Environmental Impacts



Permits	Name of Permit	CCP	BESS	Comments
Air	Covered Source Permit	Existing	Not applicable	No emissions from BESS
Storm Water	Notice of General Coverage Permit	Existing	Not Applicable	
Haz Mat	RMP Registration	Existing	Not Applicable	Recycling for batteries at end of life
Noise	Permit	Existing	Will be Updated	Do not anticipate any issues with the BESS.
Pressure Vessel	Permit to Operate	Existing	Not Applicable	
Building	Construction	Existing plant	To be Filed	Modularized & containerized design

8. Environmental Impacts

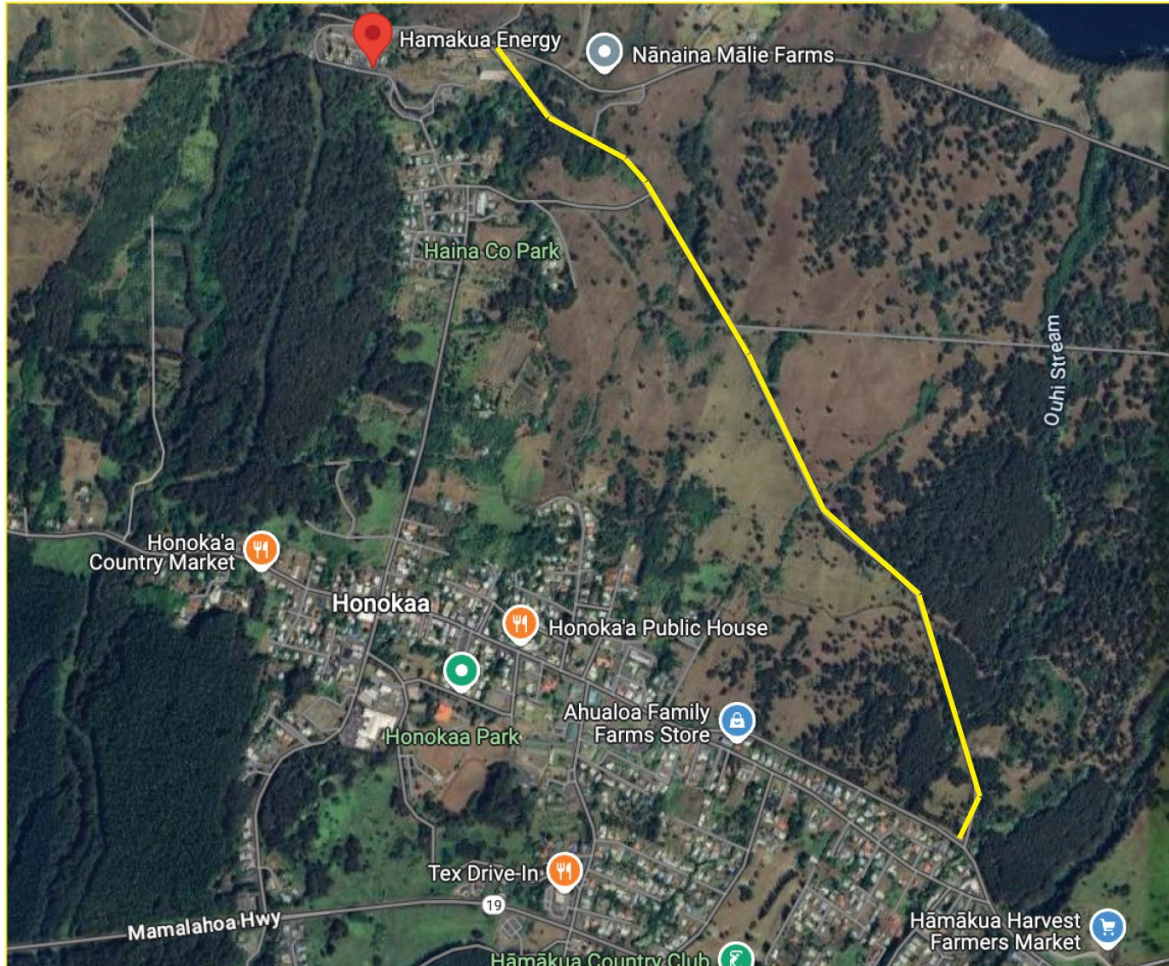
- No pre-existing environmental conditions exist due to consistent site stewardship
- All site employees are local and are committed to maintaining the environment
- Ownership prioritizes the importance of the environment over the term of the existing contract and new contract



9. Cultural Impacts

- A thorough archeological assessment conducted in July 2024 did not identify any cultural impacts associated with the Hāmākua site and associated land
 - Former Hāmākua Sugar Company – Haina Mill
 - Land on which plant was built and operated on since 2000 has been zoned industrial for decades
 - Special Permit Number 939 issued in 1996 to confirm ability for continuous operation
 - Project is confirmed to retain all required land use permits for the term of the project
 - Existing utilities & electrical infrastructure are confirmed to be permissible used of land

10. Construction Updates/Related Impacts



- **Minimal community impact due to construction:** project upgrades / refurbishments will maintain existing major equipment onsite
- **New BESS modular solution:** rapid deployment and commissioning for connecting batteries onto grid fast
- **Service road use:** minimizes impact to Honoka'a community for any heavy equipment during construction

10. Construction Updates/Related Impacts



Critical parts will be procured and be stored onsite prior to new PPA

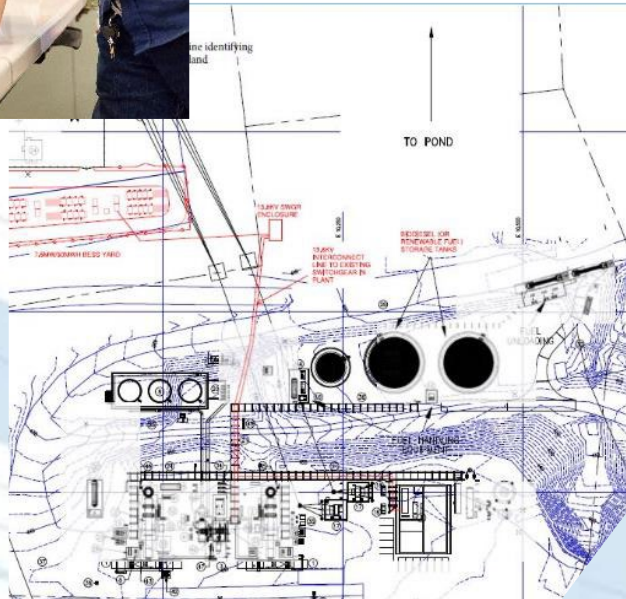


7.5 MW/ 30 MWhr Battery Storage System



New Controls System

11. Local Labor and Community Impact



- Existing Site Operations:
 - 17 Total Site Employees
 - 11 Operators / 6 Office
- Site Refurbishment Work:
 - 5 local contractor companies engaged
 - 30 total individuals contracted
- Site Expansion Work:
 - New construction jobs associated with the battery storage project construction to provide employment at prevailing wages

12. Community Benefits Package

- Hāmākua is committed to continue its financial contributions as it has done for many years and continue to identify other community organizations
- Primary benefactors:
 - Toys for Tots
 - Honokaʻa High School Sponsorship
 - Hawaiʻi Island Food Bank
 - Hawaiʻi Special Olympics



12. Community Benefits Package



Honoka'a High Student Government

Boys & Girls Club of the Big Island

Hawai'i Community College **The Salvation Army**

Honoka'a High School Honoka'a Hongwanji

Aloha Council Boy Scouts **Toys for Tots** King's Chapel

Honoka'a High Leadership **Hawai'i Island Food Bank**

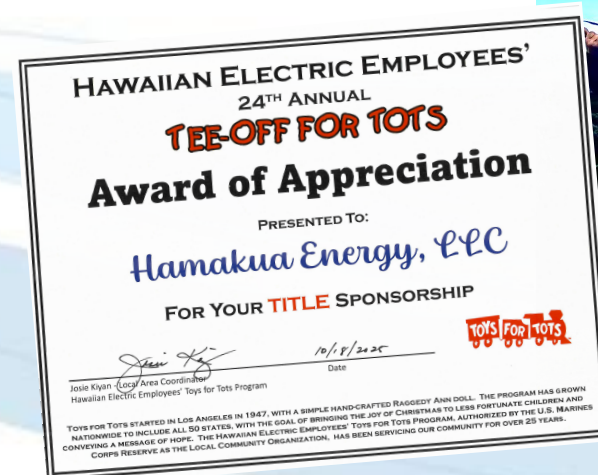
Special Olympics Hawai'i Honoka'a High Student Girls Softball

Annual Team Ohana Bodyboarding

Our Lady of Lourdes Church

12. Community Benefits Package

- With the new PPA, Hāmākua annual commitment to the community will be \$180,000 per year
- Hāmākua will continue the comprehensive community outreach program
- Hāmākua is committed to continue and enhance its engagement with the local community as it has successfully done for 25+ years with the existing project



13. Where to Find More Info

Website <https://hamakuaenergyllc.com/>



[About Us](#) | [Development Process](#) | [Benefits](#) | [Government Approvals](#) | [Cultural Assessment](#) | [Community Outreach](#) | [FAQs & Contact](#)



Hamakua Energy provides electricity for Hawaiian Electric's grid to distribute to homes and businesses throughout Hawaii Island.

Our plant has been operating for about 25 years. Hamakua Energy, located in Honokaa on the northern coast of Hawaii Island, is part of the Hamakua Holdings, LLC ohana. Hamakua Energy focuses on developing green infrastructure and being a catalyst for Hawaii's transition to a zero-carbon economy. Hamakua Energy's power plant generates 60 megawatts of electricity a day, which supplies about a

14. Other Plant Updates

Preparations for the New PPA



- 100% renewable fuel capabilities
- Refurbished onsite storage tanks and piping
- Refurbished combustion turbines & generators
- Refurbished steam turbine & generator
- Refurbished balance of plant equipment
- Increased inventory of onsite capital parts

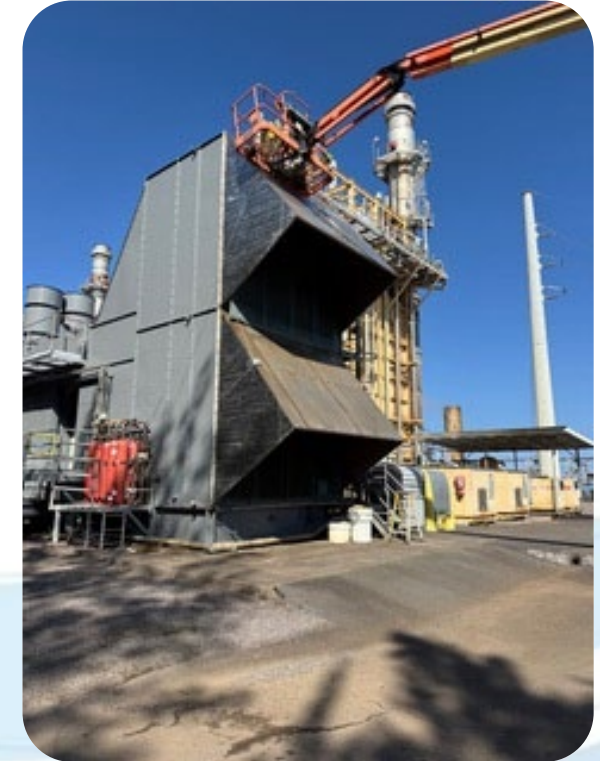
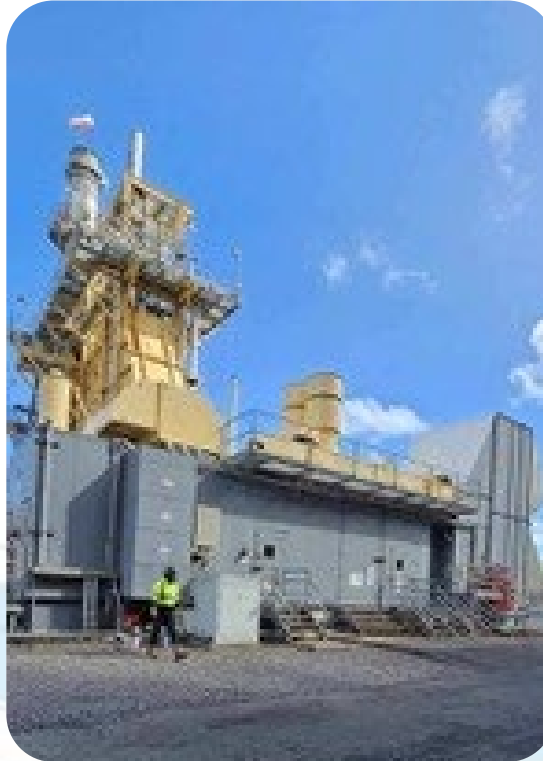
14. Other Plant Updates

- Operational
 - Through end of 2025, no safety accidents and/or environmental incidents
 - Improved availability year over year
 - Revised organizational structure
- On-going Project
 - Repainting/Rejuvenation
 - Repair of fuel tanks
 - Refurbished combustion turbines
 - Operational flexibility improvements
 - Multiple capital projects to improve reliability
 - Replacement of RO/EDI Water Treatment System
 - Completion of overhaul of black start generator



14. Other Plant Updates

- Recognizing our local contractors
 - Fukunaga Electrical
 - Gibs Services
 - DeRego Services
 - TANCO
 - APB
 - Big Island Mechanical
 - Power Generation Services



Thank you to our local contractors!

Questions/Comments for Today?



Please send via:

- * Chat function
- * Email: Akomatsuzaki@hamakuaenergy.com

Plant Contact Information:

- * Phone: (808) 775-1812
- * Mailing Address: Hāmākua Energy, LLC
45-298 Haina Camp Road
P.O. Box 40
Honoka‘a HI 96727