

# **Focus 2050**

## ***Strengthening Our Future Together at Hāmākua Energy***

4th Quarter Community Outreach  
Meeting

by: Hāmākua Energy Team

*Nov 18, 2025*



# Logistics



- Community on mute until Q&A
- Questions:
  - Please email:  
[Akomatsuzaki@hamakuaenergy.com](mailto:Akomatsuzaki@hamakuaenergy.com)
  - Or utilize chat function



# Agenda

- Introduction of the newest members of our Hāmākua team
- Overview of Hāmākua
- Update on our activities from this past year
- Our future plans to make Hawai‘i Island more energy resilient.





# Meet the Team Leads



- Anthony (Tony) Pastrama, Hāmākua Plant Manager
- Amy Komatsuzaki, Asset Manager
- Dan Muxie, Owner Representative

# Hāmākua Overview

- Hāmākua Energy located in Honokaʻā, Hawaiʻi
  - 60 MW combined cycle power plant in operation since 2000
  - Provides approximately 1/5 of Island's energy
  - One of the most fuel-efficient power plants on the island
  - New contract under negotiation from 2030-2050
  
- Hāmākua Battery Energy Storage System (BESS)
  - 7.5 MWs (30 MWhrs, 4-hour duration)
  - Planned project completion 2030
  - Negotiating new power purchase agreement with Hawaiian Electric for a 20-year term
  - BESS project designed to reduce low load CT operations

# Plant Updates

- Operational
  - Through end of third quarter, no safety accidents and/or environmental incidents
  - Improved availability year over year
  - Revised organizational structure
  
- Project
  - Repainting/Rejuvenation
  - Repair of fuel tanks
  - Refurbished combustion turbines
  - Operational flexibility improvements
  - Multiple capital projects to improve reliability



# Project Plans

Critical parts will be procured and be stored onsite prior to 2030



**7.5 MW/ 30 MWhr Battery  
Storage System**



**New Controls System**

## Plant Updates (cont.)

### Preparations for the New PPA in 2030...



- 100% renewable fuel capabilities
- Refurbished tank storage and piping onsite
- Refurbished combustion turbines & generators
- Refurbished steam turbine & generator
- Refurbished balance of plant equipment
- Increased inventory of onsite capital parts



# Interconnection Route



## Interconnection

Use existing Haina substation

## Route

No change

## Substation

HELCO reviewing potential impacts

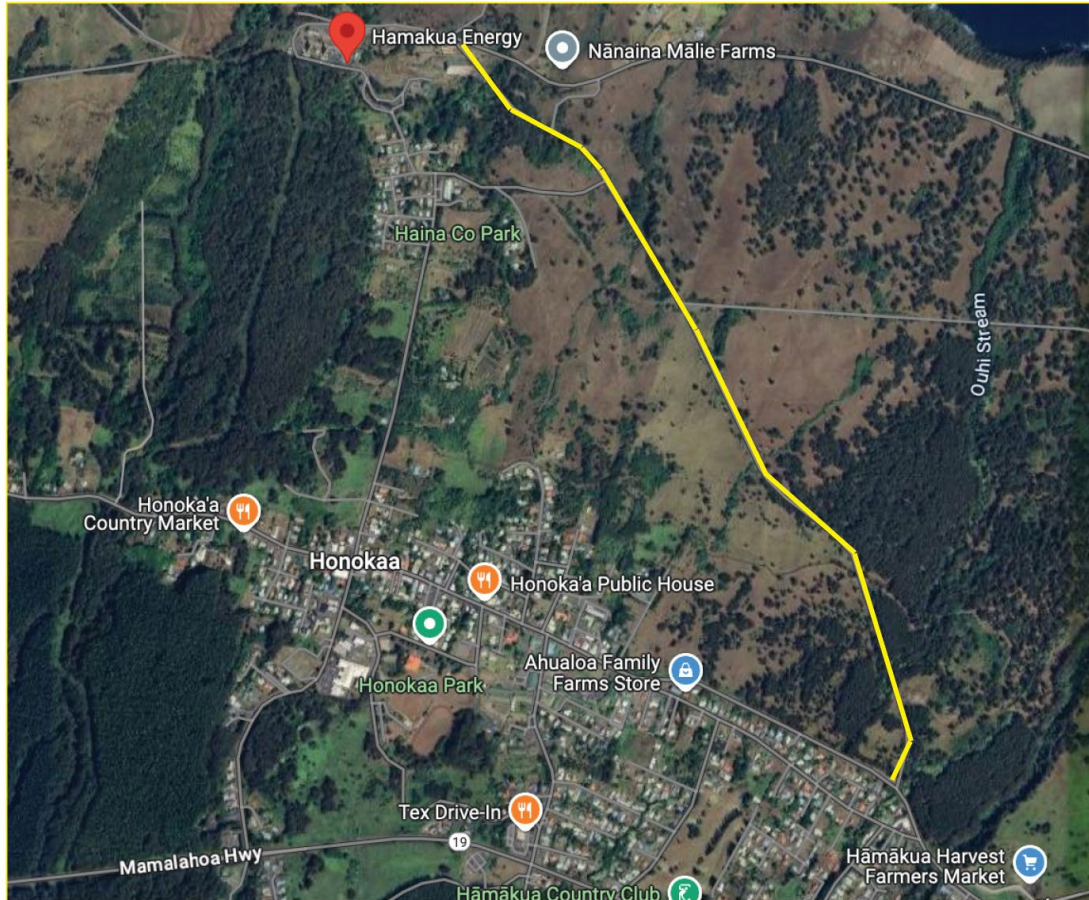
# Government Permits/ Environmental Impacts



Permits	Name of Permit	CCP	BESS	Comments
Air	Covered Source Permit	Existing	Not applicable	No emissions from BESS
Storm Water	Notice of General Coverage Permit	Existing	Not Applicable	
Haz Mat	RMP Registration	Existing	Not Applicable	Recycling for batteries at end of life
Noise	Permit	Existing	Updated	Keep current, include BESS at appropriate time
Pressure Vessel	Permit to Operate	Existing	Not Applicable	
Building	Construction	Existing plant	To be Filed	Minimal construction as BESS containerized design



# Construction Related Impacts



- **Minimal construction:** project upgrades/ refurbishes existing equipment on same footprint
- **New BESS containerized solution:** minimizes on-site work
- **Service road use:** for any large equipment minimizes impact to Honoka'ā community

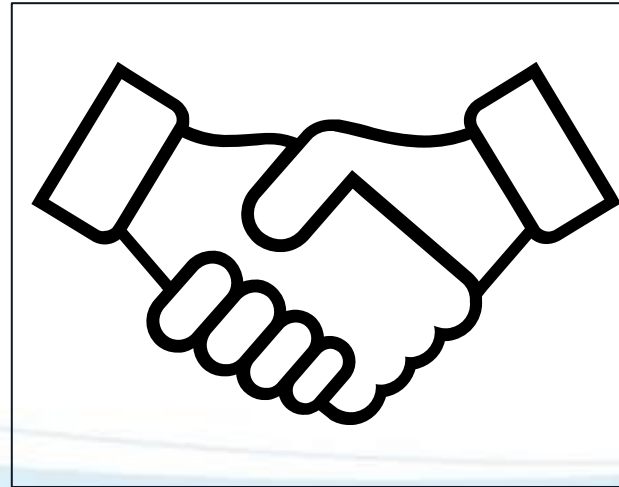
# Community Benefits



An Enduring Commitment to the Community



Our Past



Our Present

Commitment to  
Community,  
Active Partner  
Serving Future  
Generations

Our Future

New ownership evaluating opportunities for the most impact to the community.



# Contact Information

Website <https://hamakuaenergyllc.com/>

Contact Email [info@hamakuaenergyllc.com](mailto:info@hamakuaenergyllc.com)

Contact Phone (808) 775 – 1812

Mailing Address Hamakua Energy, LLC  
45-298 Haina Camp Road  
P. O. Box 40  
Honokaa, Hawaii 96727





Questions/Comments?



Please send via:

- \* Chat function

- \* Email: [Akomatsuzaki@hamakuaenergy.com](mailto:Akomatsuzaki@hamakuaenergy.com)





**Mahalo!**

**We will meet again in Q1 2026**

